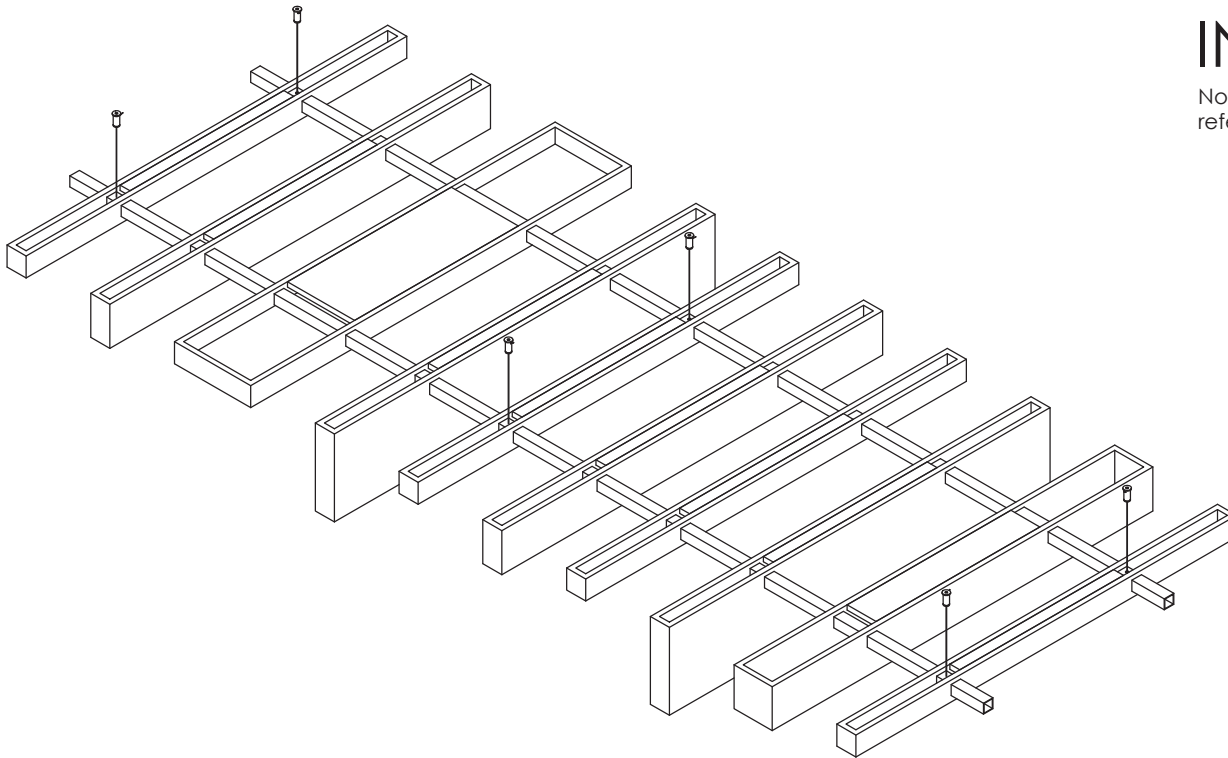


# BOX BAFFLES INSTALL GUIDE

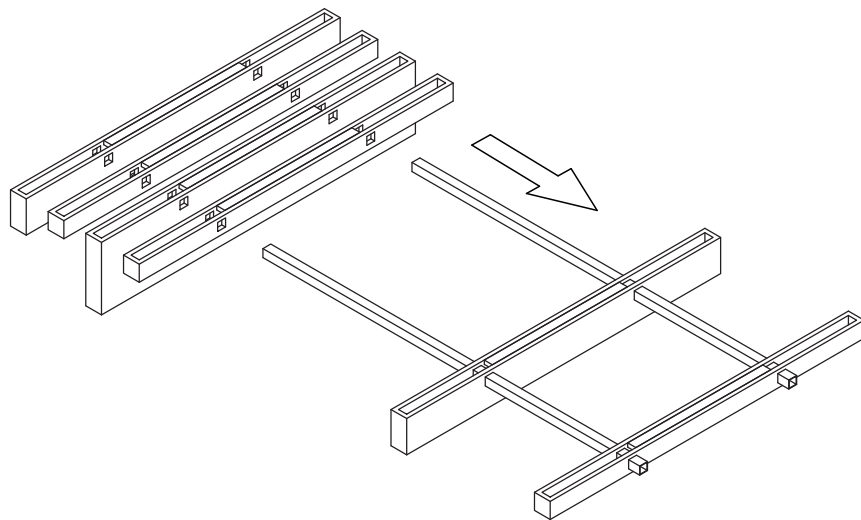
Note: Assembly image is for  
reference only



[www.crownsurfacesolutions.com](http://www.crownsurfacesolutions.com)  
e: [info@crownsurfacesolutions.com](mailto:info@crownsurfacesolutions.com)  
p: 416.245.2900

# BOX BAFFLES ASSEMBLY

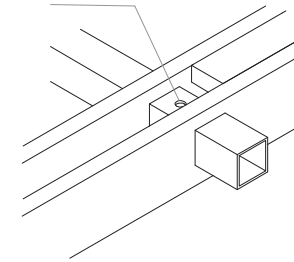
1) Thread baffles onto the square mounting beams provided as per design specified by client  
Note: spacing is not pre-determined, please refer to design from specifier for spacing dimensions



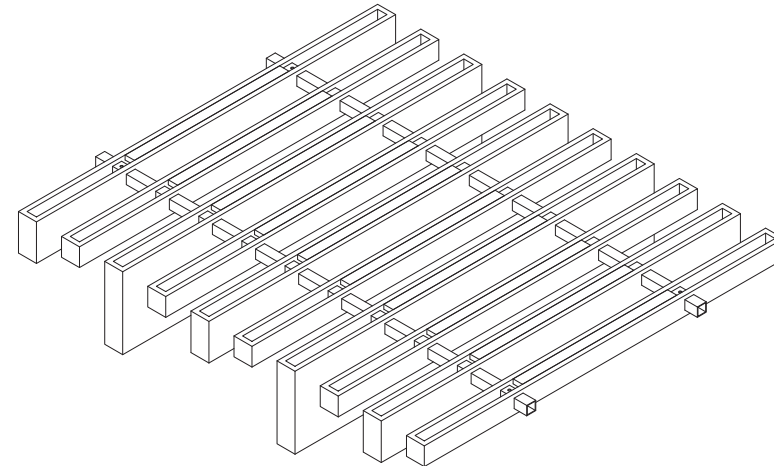
**STEP 1**

2) Drill Mounting holes in square beam in the centre of end two sleepers. for 3 hangers per mounting beam, locate the second hole as close to the middle of the beam as possible.

drill size: 7mm  
depth: through both sides of tube



3) Baffle assembly is complete



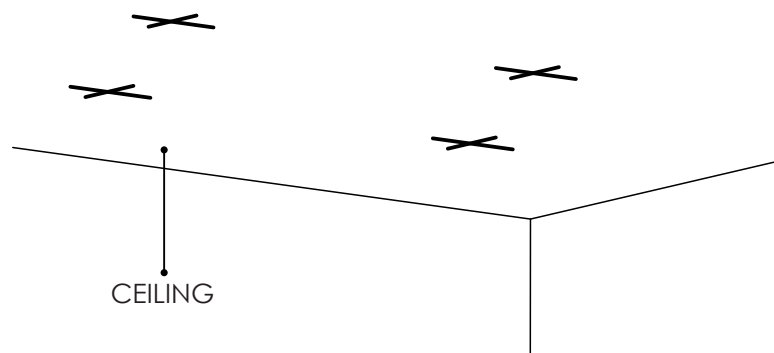
**STEP 2 & 3**

Note position of mounting holes are centred on chosen sleepers to hide fitting.

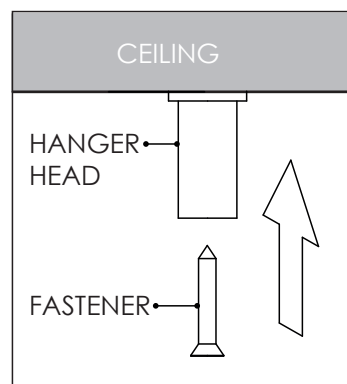
Above arrangement is for reference only to show an assembled system. Refer to specification for correct arrangement and spacing of sleepers for your job.

## BOX BAFFLES SUSPENSION METHOD

4) Place baffle assembly up to ceiling in desired location. Mark position of through holes which correspond to the mounting holes.

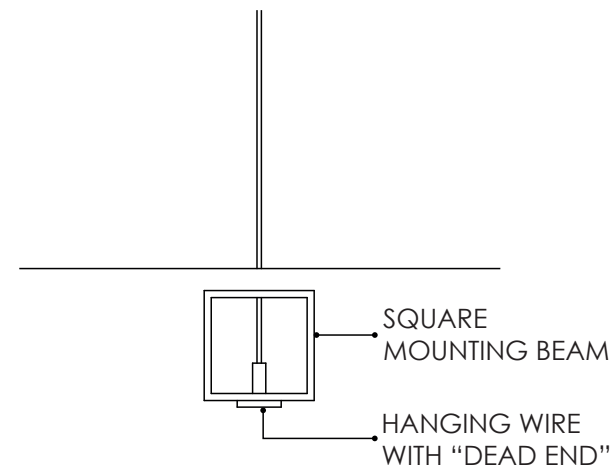
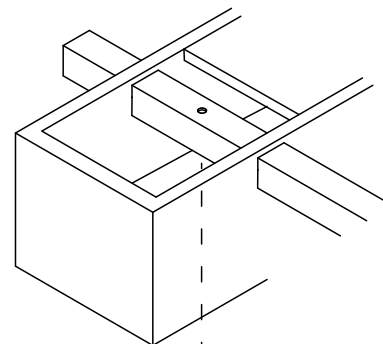


5) Consulting the “**Baresque Systems Fixing Directory**”, select the appropriate fixing method for your substrate & install ‘hanger heads’. **Please note, screws are not supplied.**



**STEP 4 & 5**

6) Thread wires through mounting holes in square mounting beams from inside sleepers.

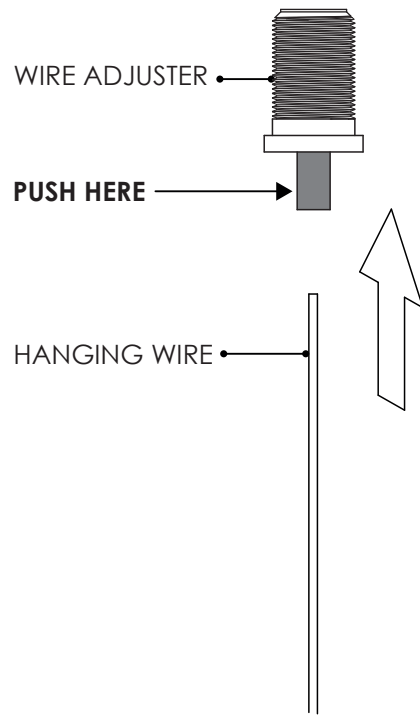


**STEP 6**

**PLEASE NOTE: BAFFLE INSTALLATION  
WILL REQUIRE 2 PEOPLE.**

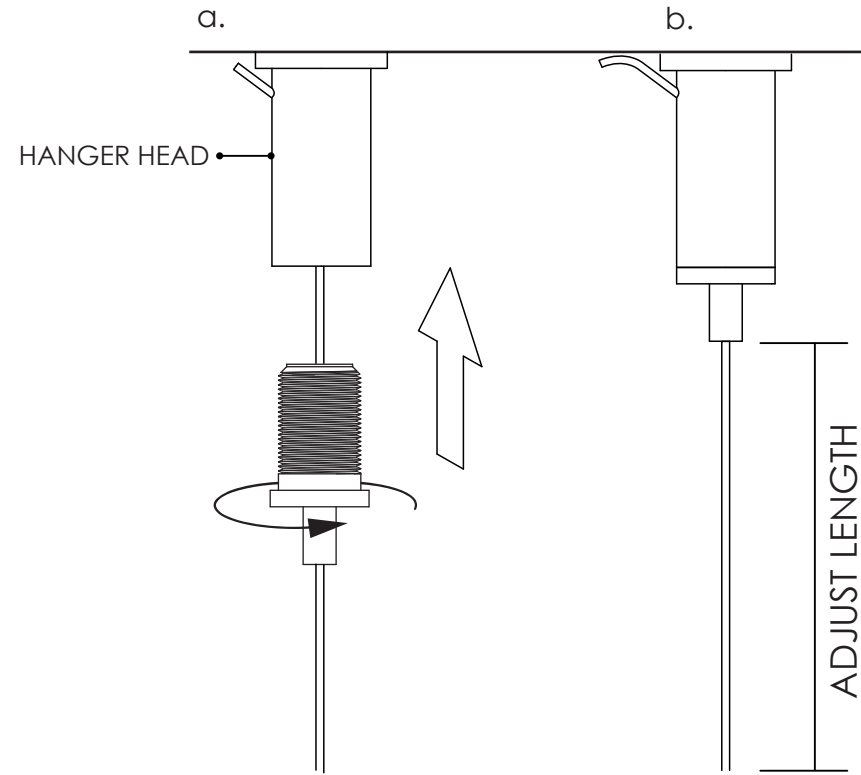
# BOX BAFFLES SUSPENSION METHOD

7) Feed top of wire through tip of 'wire adjuster' (as shown). Push button (shown in grey) to adjust wire length. Release the button to lock in place.



**STEP 7**

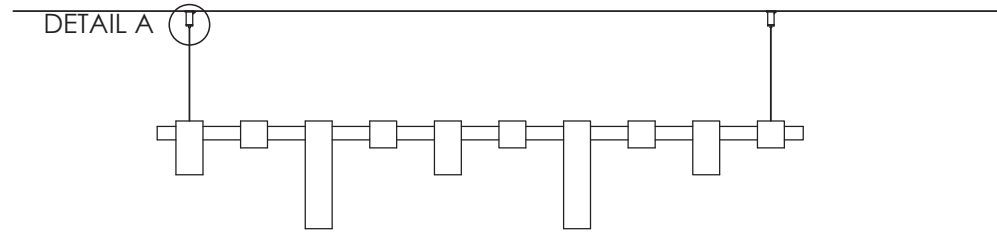
8) Feed wire through hole in the side of 'hanger head'. Screw 'wire adjuster' into 'hanger head'. When all wires are in place, adjust lengths so baffle assembly hangs level.



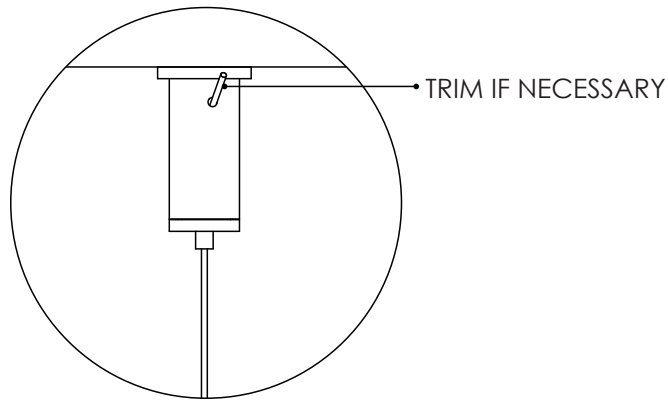
**STEP 8**

**PLEASE NOTE: BAFFLE INSTALLATION  
WILL REQUIRE 2 PEOPLE.**

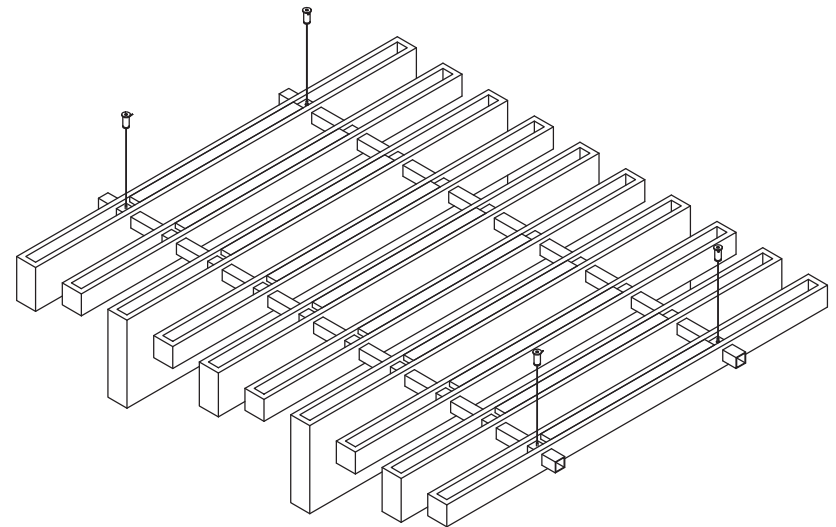
# BOX BAFFLES SUSPENSION METHOD



SIDE VIEW



DETAIL A VIEW



Note: Assembly image is for reference only

**COMPLETED INSTALL**

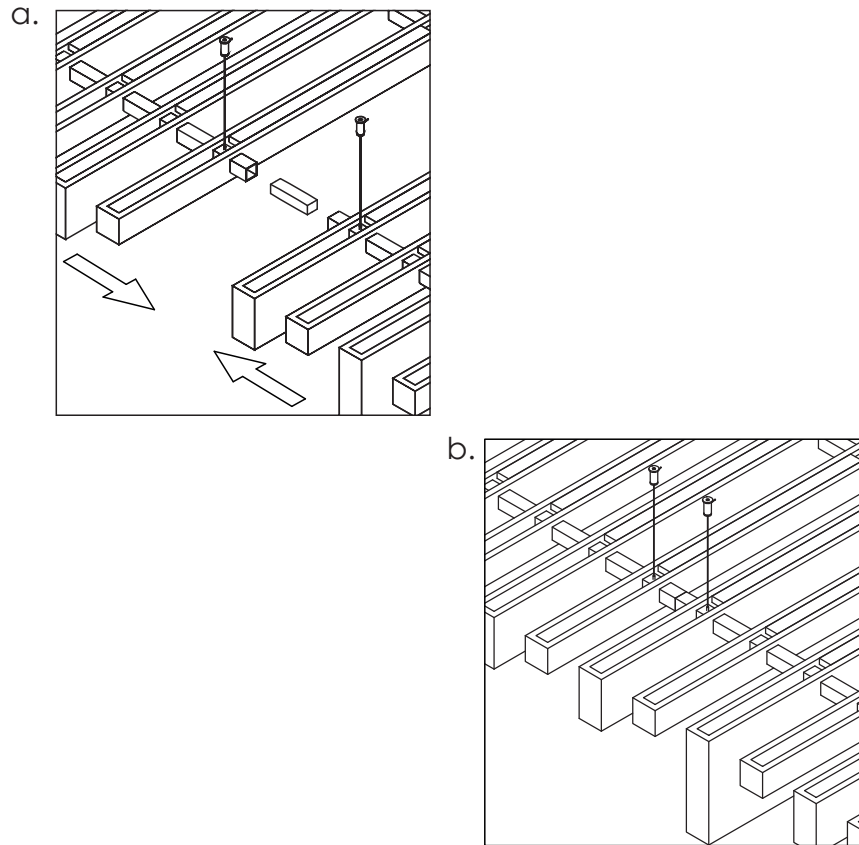
**PLEASE NOTE: BAFFLE INSTALLATION  
WILL REQUIRE 2 PEOPLE.**

# BOX BAFFLES

## CONNECTOR & CAPPING DETAIL

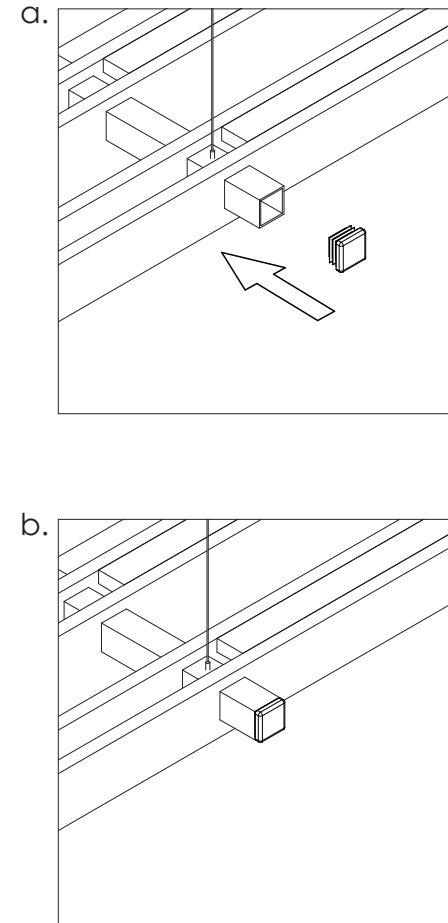
### CONNECTOR DETAIL

To connect multiple baffle assemblies together, insert connectors into open ends of square mounting beams and push assemblies together as shown.



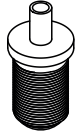
### CAPPING DETAIL

To cap ends of baffle assembly- insert end caps provided as shown.

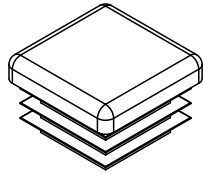


**PLEASE NOTE: BAFFLE INSTALLATION  
WILL REQUIRE 2 PEOPLE.**

**BOX BAFFLES  
PARTS**



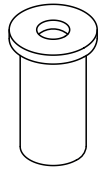
**WIRE ADJUSTER**



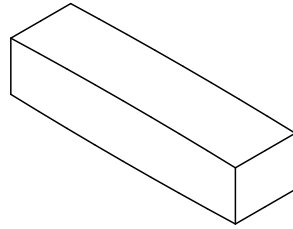
**END CAPS**



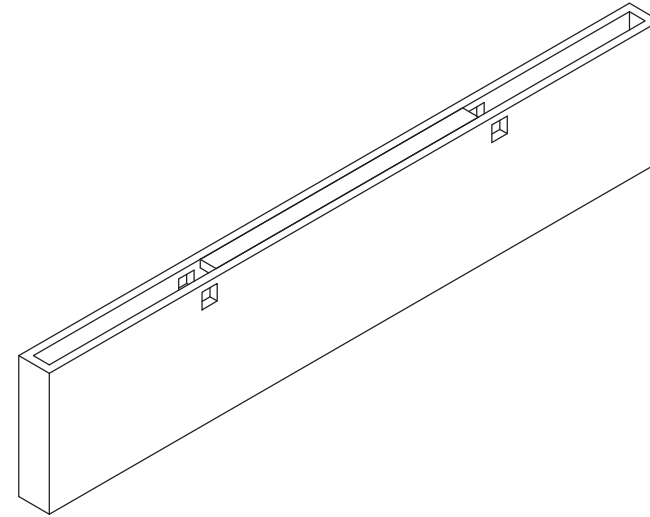
**SQUARE MOUNTING BEAM**  
SIZE, COLOUR AND FINISH AS PER SPECIFICATION



**HANGER HEAD**



**CONNECTORS**



**TYPICAL SLEEPER**  
SIZE, COLOUR AND FINISH AS PER SPECIFICATION



**HANGING WIRE**

**PLEASE NOTE: QUANTITIES OF EACH  
PART AS PER SPECIFICATION AND ORDER**